

# Investigating Rivers

## Learning Objective:

To investigate a river in detail, including the effects on the environment and landscape.



Today we will be  
investigating the River  
Nile.

What do you  
already know about this  
river?

Back

[www.planbee.com](http://www.planbee.com)

Next



Can you think of some questions you could ask  
to find out about the River Nile?



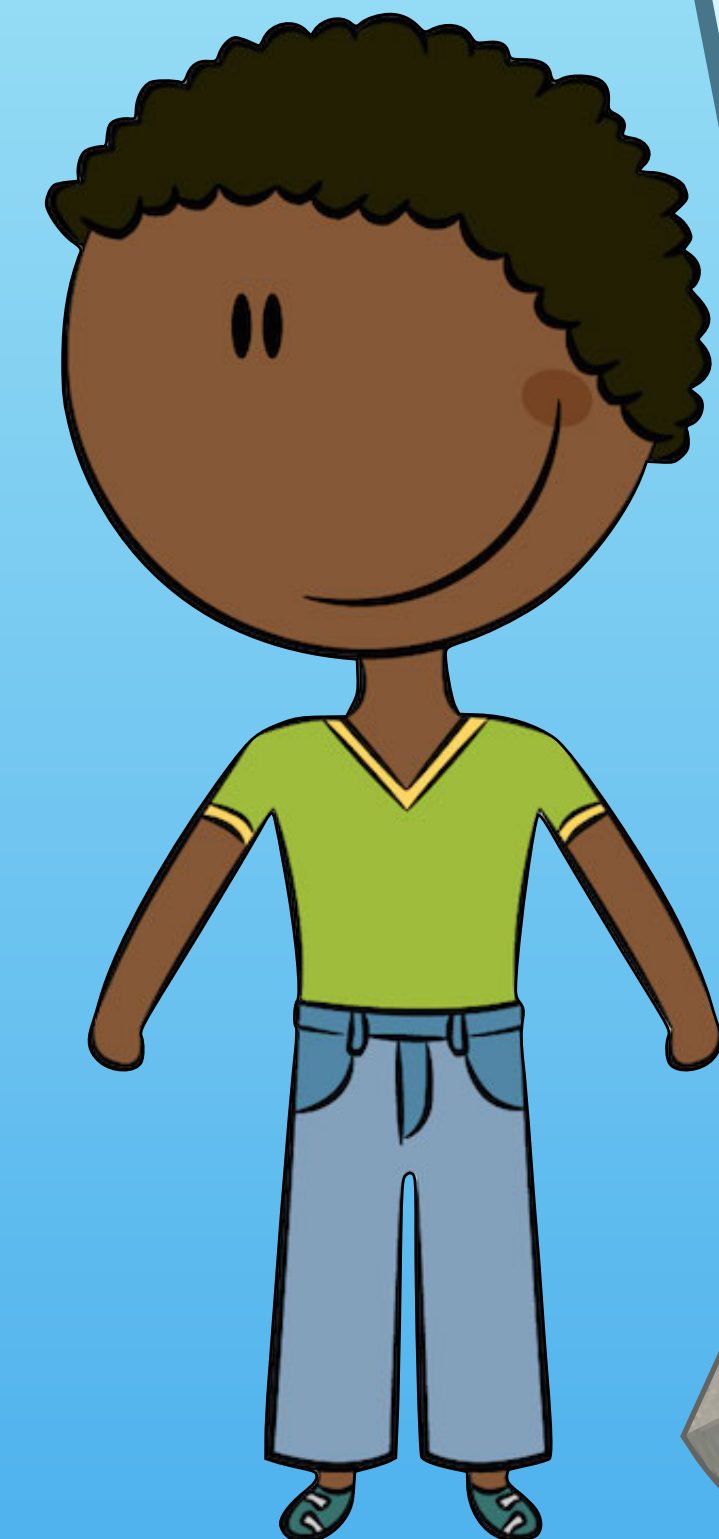
The River Nile is the longest river in the world.

It is 6,670 km (4,160 miles) long.

The River Nile is in Africa and found in the country, Egypt.



Wow! It does look long.



Back

Next





The River Nile has two main tributaries, the White Nile and the Blue Nile.

The White Nile is the main stream and the Blue Nile is the source of most of the water and silt.

They flow from different directions and meet near Khartoum in Sudan.





The River Nile runs through  
several different countries in  
Africa including:

Sudan

Uganda

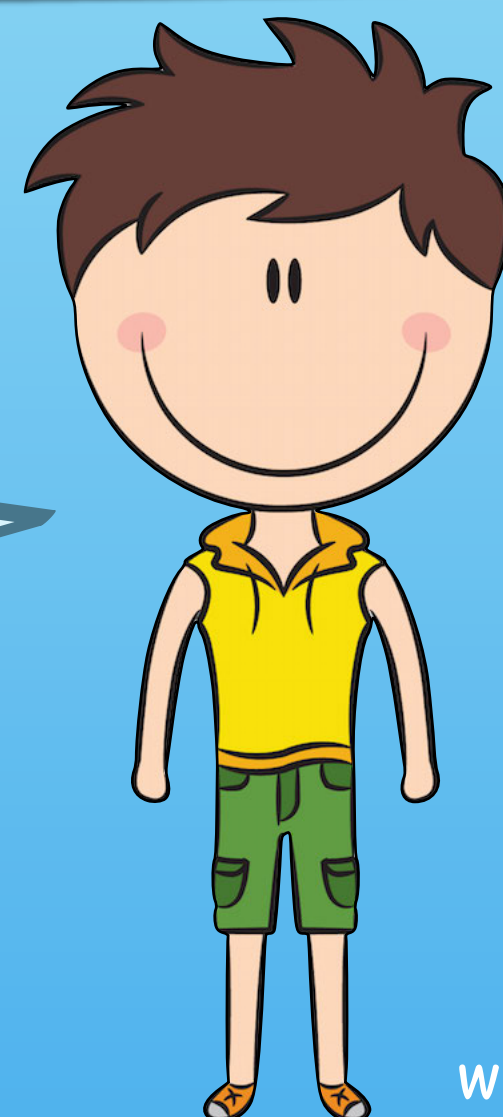
Ethiopia

Egypt and

Burundi

Other sources include: South  
Sudan, Tanzania, Rwanda,  
Kenya and Zaire.

Look at the  
houses along the  
river.



Back

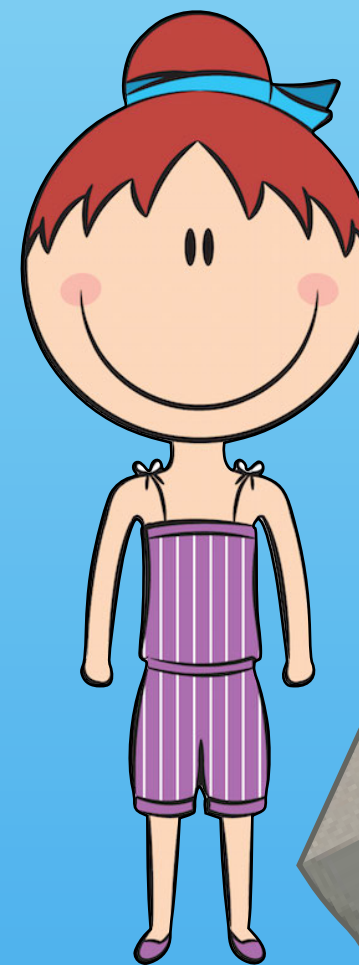
Next



The River Nile has many different habitats available for a range of plants and animals. The soil along the banks of the river is very fertile so lots of plants grow. This attracts many reptiles and fish.



Even hippopotamus?



Back

Next



Many major cities and towns  
have developed near the Nile.  
The river provides the cities  
and towns with water to use.  
The main cities and towns

are:

Cairo

Aswan

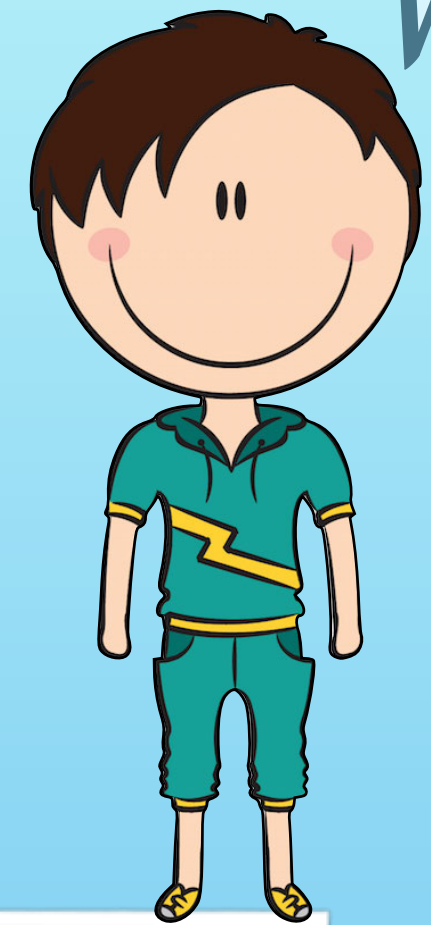
Alexandria

Luxor

Khartoum



These towns  
look nice.



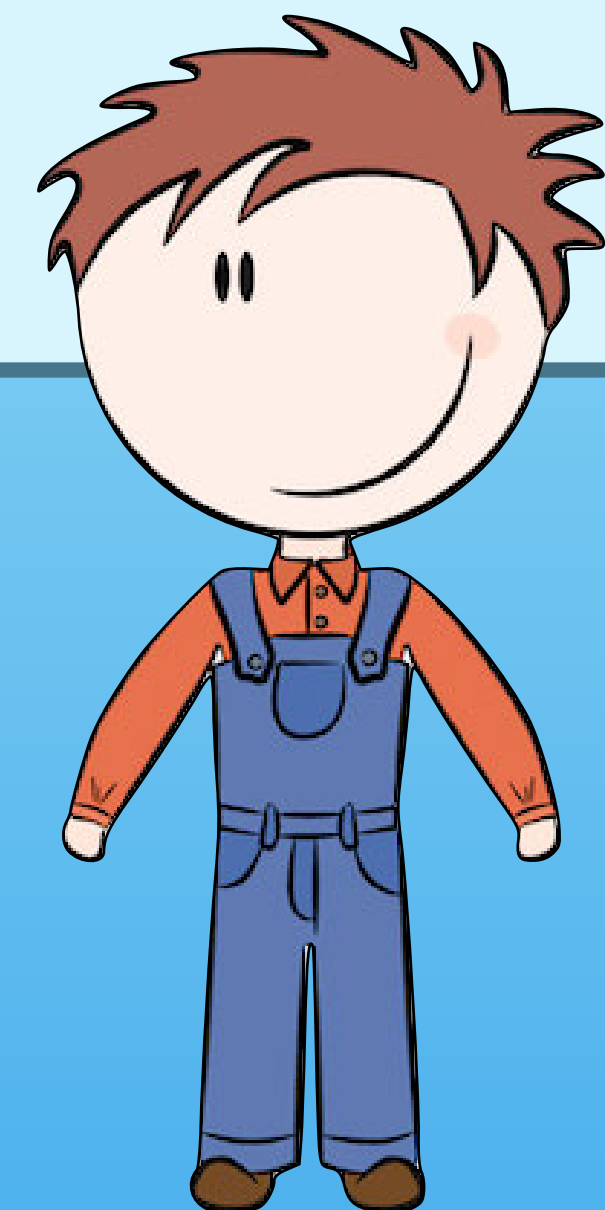
Back

Next



Have we answered all our  
questions?

What else do we need to find  
out about?



Back

Next



# Plenary

Discuss these  
questions with a partner:

Why is the River Nile important to Egypt?

What would happen if the River Nile had never formed?

How would this have affected Egypt both in the past and in the present?



Back

Next